

LGID#: 65171  
Easter Hills MD No. 1

# EXHIBIT

## VILLAGE 5 DISTRICT BOUNDARY

WEST ONE-QUARTER CORNER  
SEC.15, T4S, R65W, 6th PM

BASIS OF BEARINGS  
WEST LINE OF THE SW 1/4  
N 00°31'47" W 2625.14'



Scale: 1"=300'

N 89°16'54" E 987.91'

N 00°31'47" W 1312.57'

S 00°31'47" E 1315.39'

SOUTHWEST  
ONE-QUARTER  
SECTION 15  
T4S, R65W, 6TH PM

29.800 ACRES

POINT OF BEGINING  
SOUTHWEST CORNER  
SEC.15, T4S, R65W, 6th PM

SOUTH LINE OF THE SW 1/4  
S 89°26'43" W 2627.94'

S 89°26'43" W 987.90'

SOUTH ONE-QUARTER CORNER  
SEC 15, T4S, R65W, 6th PM

# PSOMAS

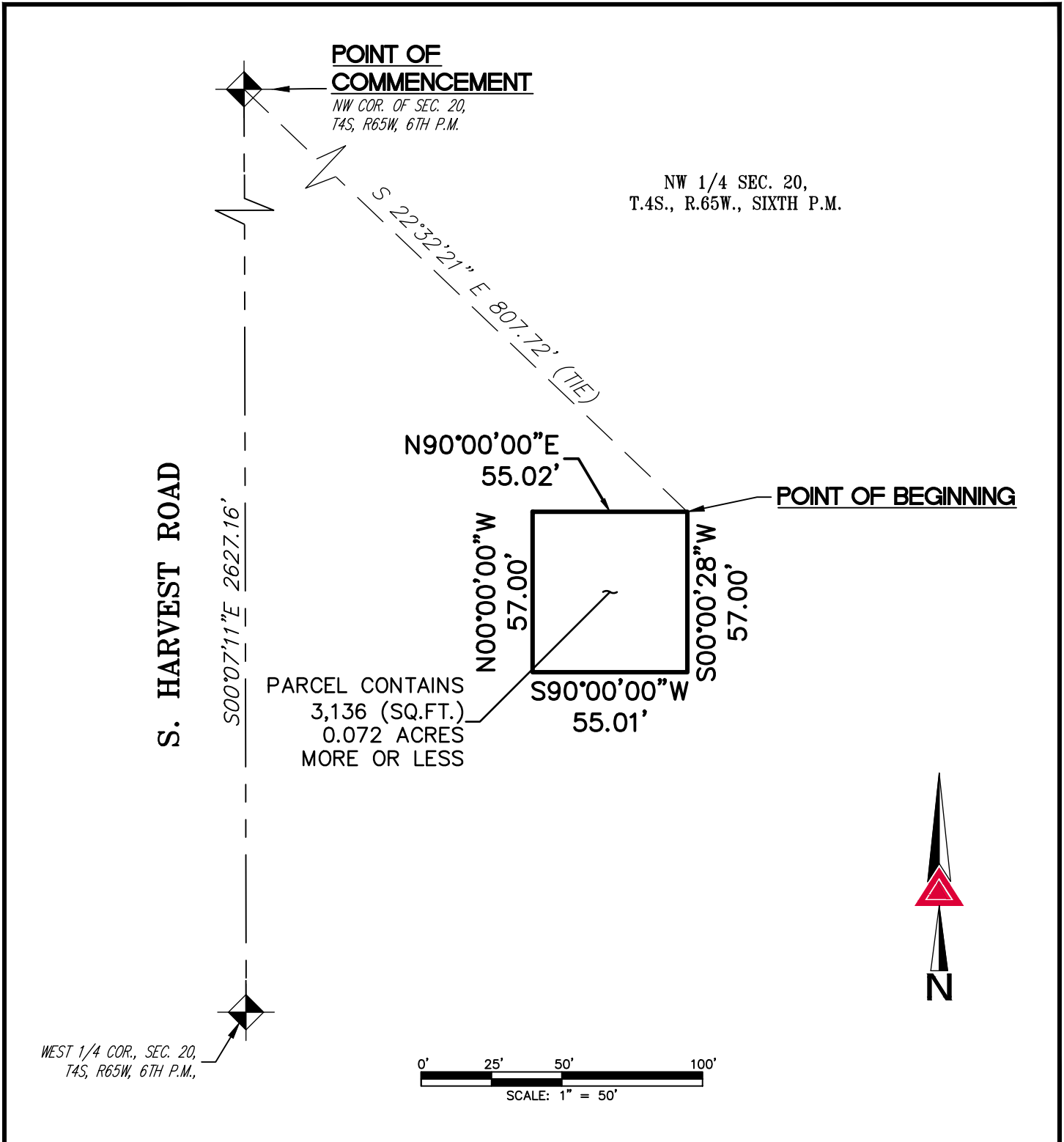
5990 Greenwood Plaza Blvd., Suite 250  
Greenwood Village, CO 80111  
(720) 493-2920 Fax: (720) 493-8112

THIS EXHIBIT DOES NOT REPRESENT  
A MONUMENTED SURVEY. IT IS ONLY  
INTENDED TO DEPICT THE ATTACHED  
DESCRIPTION.

LGID#: 65171

Eastern Hills MD No. 1

ILLUSTRATION TO EXHIBIT A



NOTE: THIS ILLUSTRATION DOES NOT REPRESENT A MONUMENTED LAND SURVEY AND IS ONLY INTENDED TO DEPICT THE ATTACHED LEGAL DESCRIPTION.

PATH: \_\_\_\_\_  
 DWG NAME: Eastern Hills Metro Dist No 1.DWG  
 DWG: SDL CHK: JRW  
 DATE: 8/2/2022  
 SCALE: 1" = 50'

Q:\19321-21 - Parklands Village Filing 1\Dwg\EXHIBITS  
 300 East Mineral Ave,  
 Suite 1  
 Littleton, Colorado 80122  
 Phone: (303)713-1898  
 Fax: (303)713-1897  
[www.aztecconsultants.com](http://www.aztecconsultants.com)

**EASTERN HILLS METRO DISTRICT NO. 1**  
 NW1/4, SECTION 20, T4S, R65W, 6TH P.M.  
 ARAPAHOE COUNTY, COLORADO  
 JOB NUMBER 19321-21 2 OF 2 SHEETS